



Part No: **M704**

Product: **CAB PROTECTOR**

Fitting kit packed by: .....

449 Heads Road, Wanganui 4501  
0800 4 BULLBARS or (06) 344 4100  
Email: [info@aliarc.co.nz](mailto:info@aliarc.co.nz)  
Website: [www.aliarc.co.nz](http://www.aliarc.co.nz)



**FITTING INSTRUCTION SHEET**

**Make:** Mitsubishi  
**Model:** Triton GLX 4WD Club Cab  
**Year:** 2019+  
**Specs:** To fit tray with Genuine Over Rail Liner

**COMPONENTS**

Qty	Fitting Kit	Checklist
4	M10 x 35 Bolt	
4	M10 Heavy Duty Flat Washer	
4	M10 Spring Washer	
2	GW250 Nut Plate c/w Guide Wire	

Fitting kit checked & initialled above

Qty	Product
1	Cab Protector

**INSTRUCTIONS**

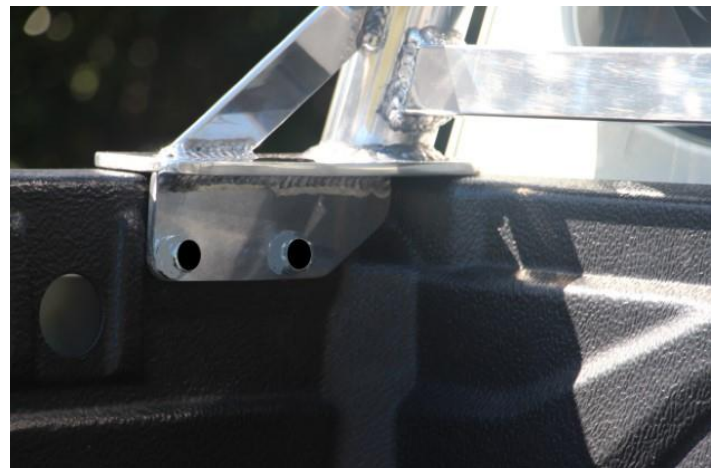
1. Fit Cab Protector in position.

Ensure liner is hard down on tray.

Use a 6mm drill bit and carefully drill through the liner and the lip of the deck.

Open both holes out with a 13mm drill.

Repeat for other side.



**2. Ensure bolts screw easily into nut plates.**

Insert nut plates with guide wire through the hole in the liner.

Align the nut plate holes with the holes in the alloy mount plate and loosely fit M10 x 35mm bolts.

Tighten all bolts.

NOTE: Torque settings for M10 Bolts - 44Nm.

After all bolts are tight, break off the guide wire and discard.



**NOTES**

- Check that the Kit contents are complete and undamaged prior to installation. Kit contents must be replaced with specified accessory components.
- Do not attach the bar to the vehicle using anchorages not intended for this purpose.
- Do not use the bar for any vehicle other than those specified by the bar manufacturer.
- Do not remove any labels from the bar.
- Do not modify the structure of the bar in any way.
- We recommend that a rust preventative is applied where holes are drilled.
- The use of an alloy polish such as 'Auto Sol' is recommended for extra shine, however hot soapy water will also clean well.