



Part No **F911.1**
 Product: **SIDE STEPS**

449 Heads Road, Wanganui 4501
 0800 4 BULLBARS or (06) 344 4100
 Email: info@aliarc.co.nz
 Website: www.aliarc.co.nz

Fitting kit packed by:



FITTING INSTRUCTION SHEET

Make: Ford
Model: 2022+ Ranger XL 2/4WD Space Cab

COMPONENTS

Qty	Fitting Kit	Checklist
8	M10 x 30 Bolt	
8	M10 Flat Washer	
8	M10 Spring Washer	
2	M14 Heavy Duty Flat Washer	

Fitting kit checked & initialled above

Qty	Product
1	Side Steps (1 x driver side, passenger side)

INSTRUCTIONS:

1. Remove front cab mount bolt and loosely re-fit with step.

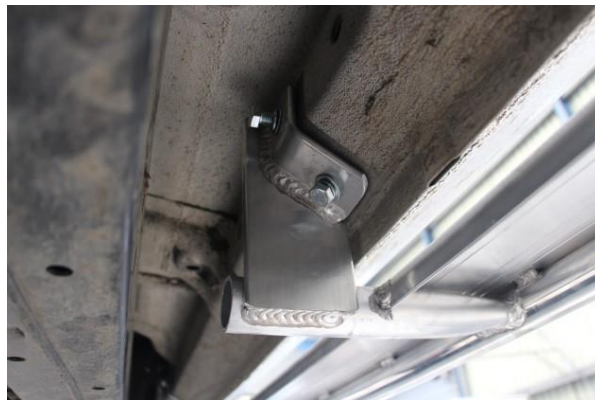
M14 heavy duty steel washer goes between the alloy mount and the rubber cab mount.

Note: The front mount will push the plastic wiring guide up when you tighten the front mount bolt.



2. Bolt middle and rear mounts to existing threaded holes.

Note: There could be plastic screw caps covering middle and rear mount holes.



3. Tighten front cab mounts to manufacturers specifications.

4. Tighten all middle and rear bolts.

Note: Torque setting for M10 bolt – 44Nm



NOTES

- Check that the kit contents are complete and undamaged prior to installation. Kit contents must be replaced with specified accessory components.
- Do not attach the bar to the vehicle using anchorages not intended for this purpose.
- Do not use the bar for any vehicle other than those specified by the bar manufacturer.
- Do not remove labels from the bar.
- Do not modify the structure of the bar in any way.
- We recommend that a rust preventative is applied where holes are drilled.
- The use of an alloy polish such as 'Auto Sol' is recommended for extra shine, however hot soapy water will also clean well.